

Foreign Consulates in Kansai

Name of Organization 総領事館・領事館	Address 住所	TEL for public 電話
Australian Consulate-General in Osaka 在大阪オーストラリア総領事館	16F Twin 21 MID Tower, 2-1-61 Shiromi, Chuo-ku, Osaka 540-6116 〒540-6116 大阪市中央区城見2-1-61 ツイン21 MIDタワー16階	06-6941-9271
Consulate-General of the People's Republic of China in Osaka 在大阪中華人民共和国総領事館	3-9-2, Utsubohonmachi, Nishi-ku, Osaka 550-0004 〒550-0004 大阪市西区鞠本町3-9-2	06-6445-9481
Consulate-General of France in Kyoto 在京都フランス総領事館	8 Izumidono-cho Yoshida, Sakyo-ku, Kyoto 606-8301 〒606-8301 京都市左京区吉田泉殿町8	075-761-2165 2988
Consulate-General of the Federal Republic of Germany in Osaka-Kobe 在大阪・神戸ドイツ連邦共和国総領事館	Umeda Tower East_35F, 1-1-88-3501 Oyodonaka, Kita-ku, Osaka 531-6035 〒531-6035 大阪市北区大淀中1-1-88梅田スカイビルタワーイースト35階3501	06-6440-5070
Consulate General of India, Osaka 在大阪インド総領事館	Senba IS Buil. 10F, 1-9-26, Kyutaro-machi, Chuo-ku, Osaka 541-0056 〒541-0056 大阪市中央区久太郎町1-9-26 船場ISビル10階	06-6261-7299
Consulate-General of the Republic of Indonesia in Osaka 在大阪インドネシア共和国総領事館	Nakanoshima Intes 22F, 6-2-40 Nakanoshima Kita-ku Osaka 530-0005 〒530-0005 大阪市北区中之島6-2-40 中之島インテスビル22階	06-6449-9898
Consulate-General of Italy in Osaka 在大阪イタリア総領事館	Nakanoshima-Festelival Tower 17F, 2-3-18 Nakanoshima, Kita-ku, Osaka 530-0005 〒530-0005 大阪市北区中之島2-3-18 中之島フェスティバルタワー17階	06-4706-5820
Consulate-General of Mongolia in Osaka 在大阪モンゴル国総領事館	Bakuromachi Estate building 3F, 1-4-10 Bakuromachi, Chuo-ku, Osaka 541-0059 〒541-0059 大阪市中央区博労町1-4-10 博労町エステートビル3階	06-4963-2572
Consulate-General of the Kingdom of the Netherlands in Osaka 在大阪オランダ王国総領事館	1-1-14 Kitahama, Chuo-ku, Osaka 541-0041 Kitahama 1-Chome Heiwa Building, 8F, Room #B 〒541-0041 大阪市中央区北浜1-1-14 北浜1丁目平和ビル8階B室	06-6484-6000
Consulate of the Islamic Republic of Pakistan in Osaka 在大阪パキスタン・イスラム共和国領事館	4F, ITM Buil. Asia Pacific Trade Center, 2-1-10, Nankokita, Suminoe-ku, Osaka 559-0034 〒559-0034 大阪市住之江区南港北2-1-10 アジア太平洋トレードセンターITM4HI	06-6569-3106
Consulate-General of the Republic of Panama in Kobe 在神戸パナマ共和国総領事館	7F Yamamoto Bldg., 71 Kyomachi, Chuo-ku, Kobe 650-0034 〒650-0034 神戸市中央区京町71 山本ビル7階	078-392-3361 3362
Consulate-General of the Republic of the Philippines in Osaka 在大阪フィリピン共和国総領事館	Twin21 Mid Tower 24F, 2-1-61, Shiromi, Chuo-ku, Osaka 540-6124 〒540-6124 大阪市中央区城見2-1-61 ツイン21 MIDタワー24階	06-6910-7881
Consulate-General of the Republic of Korea in Osaka 在大阪大韓民国総領事館	2-3-4, Nishi-shinsaibashi, Chuo-ku, Osaka 542-0086 〒542-0086 大阪市中央区西心齋橋2-3-4	06-6213-1401
Consulate-General of the Republic of Korea in Kobe 在神戸大韓民国総領事館	2-21-5 Nayakayate-dori, Chuo-ku, Kobe 650-0004 〒650-0004 神戸市中央区中山手通2-21-5	078-221-4853 4855
Consulate-General of the Russian Federation in Osaka 在大阪ロシア連邦総領事館	1-2-2, Nishimidorigaoka, Toyonaka-City, Osaka 560-0005 〒560-0005 豊中市西緑丘1-2-2	06-6848-3451 3452
Royal Thai Consulate-General in Osaka 在大阪タイ王国総領事館	Bangkok Bank Buil. 4F 1-9-16, Kyutaro-machi, Chuo-ku, Osaka 541-0056 〒541-0056 大阪市中央区久太郎町1-9-16 バンコックバンクビルディング4階	06-6262-9226 9227
British Consulate General in Osaka 在大阪英国総領事館	Epson Osaka Building 19F, 3-5-1 Bakuro-machi, Chuo-ku, Osaka 541-0059 〒541-0059 大阪市中央区博労町3-5-1 御堂筋グランタワー19階	06-6120-5600
American Consulate-General in Osaka-Kobe 在大阪・神戸アメリカ合衆国総領事館	2-11-5 Nishitenma, Kita-ku, Osaka, 530-8543 〒530-8543 大阪市北区西天満2丁目11-5	06-6315-5900
Consulate-General of the Socialist Republic of Vietnam in Osaka 在大阪ベトナム社会主義共和国総領事館	4-2-15, Ichino-cho, Sakai-city 590-0952 〒590-0952 堺市堺区市之町東4-2-15	072-221-6666

Izumi City Archival

Disaster Prevention Guide Map



Illustrations: Japan Cabinet Office "Let's Prevent Disasters"

Family Disaster Prevention Worksheet

Family Disaster Shelter	Family Disaster Gathering Area	Disaster Emergency Contact Information

Family Name	Birthdate	Blood-type	Company-School Phone Number	Mobile Phone Number

Making the Izumi City Disaster Prevention Guide Map

In recent years, large-scale natural disasters have been occurring across the country such as the Great East Japan Earthquake in 2011, the earthquakes in Kumamoto in 2016, and the 2017 heavy rainfall and flood events in Kyushu that caused heavy damage.

Last year's Typhoon Lan caused considerable damage to Izumi City and there is cause for concern regarding future disasters such as earthquakes caused by the Nankai Trough or the Uemachi Fault.

This map contains useful knowledge for disaster situations you may find yourself in, instructions on how to prepare, and how to evacuate.

In a disaster it's important to prepare to help not just yourself but others as well. We hope this guide is helpful in protecting you, your family, and your neighbors in a disaster.

We would also like to thank everyone who had a hand in creating this guide.

March 2018
Izumi City

Izumi City Disaster Prevention Guide Map

Table of contents

Means to Obtain Disaster Information	1 (left)
What to do in an Earthquake	2~3
Tremor-prone Area Map	4
Building Collapse Risk Map	5
Weather Knowledge	6
In the Event of a Typhoon or Heavy Rainfall	7
Types of Sediment-related Disasters	8
Keeping Your Pets Safe	9
Evacuation and Disaster Information	10
Getting Disaster Information	11
Evacuation Shelter Location List	12
Medical Facility List	13
Dental Facility List	14
Health, Medical Care, and Pension	15~16
Broadcasting or Transmitting Stations that Send Earthquake/Disaster Information	17
Welfare Evacuation Shelter Disaster Preparedness Map Legend	18
Disaster Prevention Map Index	19
Detailed Maps ①~⑮	20~49
Tsunami-prone Areas	20
Volunteer Firefighters Voluntary Organization for Disaster Prevention Assisting Persons with Special Needs in a Disaster Supporting those with Special Needs with Evacuation Disaster Volunteer Center	33
Disaster Emergency Message Dial	44
The Indoors and Outdoors in a Disaster	50
Disaster Planning with Your Family	51
Reservoir and Embankments	52
Reservoir Hazard Maps ①~④	53~56
Map of Shelters around my Home	57
Foreign Consulates in Kansai	58

What to do in an Earthquake


Ensuring the safety of your home

When a big earthquake hits, it can be quite difficult to deal with it in a calm manner. However, one misstep could be the difference between life or death. Equip yourself with the knowledge to handle an earthquake by remembering the following outcome patterns for each intensity level of the Japan Meteorological Agency's seismic intensity scale and how to ensure the safety of yourself and others inside and outside your home.

Seismic Intensity Scale and Possible Situations

<ul style="list-style-type: none"> ● Most people inside structures will feel tremors ● Majority of people sleeping will be woken up ● Dishes in cupboards or fixtures may rattle 	<ul style="list-style-type: none"> ● Standing becomes difficult ● Majority of furniture not fixed to the ground will move or fall over ● Doors may become unopenable ● Wall tiles and window glass may shatter and fall to the ground ● Roof tiles of wooden structures with low earthquake resistance may fall and buildings may sink, lean to one side, or completely topple over
<ul style="list-style-type: none"> ● Most people will be surprised by the tremors ● Lighting fixtures and other items suspended from walls and ceilings will shake drastically ● Unstable items may fall over 	<ul style="list-style-type: none"> ● Movement becomes impossible without crawling, may be thrown in the air ● Almost all furniture not fixed to the ground will move and/or fall over ● Most wooden structures with low earthquake resistance will either lean or completely topple over ● Large ground fissures, land slides, and avalanches may occur
<ul style="list-style-type: none"> ● Majority of people will panic and feel the need to grab on to something to stable themselves ● Dishes or books may fall from shelves ● Furniture not fixed to the ground may move, and unstable items may fall over 	<ul style="list-style-type: none"> ● Almost all wooden structures with low earthquake resistance will either lean or completely topple over ● Wooden structures with high earthquake resistance may lean to one side ● Reinforced concrete buildings with low earthquake resistance may topple over as well
<ul style="list-style-type: none"> ● Walking may prove difficult without holding on to something ● Many dishes and books will fall from cupboards and shelves ● Furniture not fixed to the ground may fall over ● Unreinforced concrete-block walls may crumble 	

Ensuring your safety while outside

 <p>At shopping malls and around buildings Be careful of collapsed building debris and broken glass, and take refuge in a safe place.</p>	 <p>Inside a building Be cautious of overturned shelves and fallen items. An empty or near-empty hallway is comparatively a safe place in a building.</p>	 <p>In underground areas Stay calm and head towards the nearest exit by following the emergency exit guide lights.</p>	 <p>In an elevator Push the buttons for all floors and get off at the first available floor.</p>
 <p>Inside a vehicle Provide openings for emergency response vehicles to pass by moving to the furthest left lane. Without removing the keys from your car, close your windows and leave your doors unlocked.</p>	 <p>Residential areas Stay away from walls, fences, and vending machines. Evacuate to a wide open space.</p>	 <p>Near cliffs and precipices Get away from the cliff or precipice and evacuate to a safe area.</p>	 <p>On the train Grab onto seats, adopt a low crouching stance, and follow the train conductor's orders. Do not leave the train on your own volition.</p>

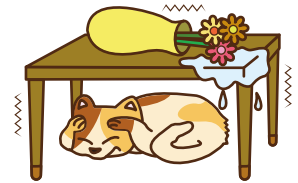
First off, make sure to mentally prepare yourself for an earthquake.

The most helpful thing you can do to protect yourself in an earthquake is to be mentally prepared beforehand so you do not panic if one happens. Listed here are 10 additional points describing what kinds of actions you should take or what mindset you should adopt in an earthquake. Please remember them as they may save your life.

What to do in an earthquake

1 As soon as you feel tremors, ensure your own safety.

When an earthquake happens, it is important to protect yourself and be cautious of your surroundings until the tremors stop.



What to do in the first 3 minutes following an earthquake

2 Check your gas line. If it is on, turn it OFF.



If you are using your stove, wait until the tremors stop before turning the fire off. If a fire starts, keep calm and put it out.

3 Rushing is the root cause of injury.



Be cautious of fallen items, furniture and broken glass when moving around.

4 Secure an exit by opening a window or a door.



Prepare yourself for aftershocks and make sure you have a secure point of exit.

5 Exit in a calm manner and be wary of falling debris.



Be careful of falling roof tiles, window glass, or signs when exiting.

6 Stay away from walls, fences, and gates.



If you feel tremors while outside, stay away from concrete walls and other walled structures.

What to do when the earthquake stops

7 Obtain correct information and take appropriate action.



Make sure to get the correct information from radio, television, or local government channels.

8 Check on the status of your house and your neighbor's.



After you have checked on the safety status of your house, be sure to check on your neighbor's as well.

9 Offer assistance to your neighbors and participate in rescuing or providing aid to other people.



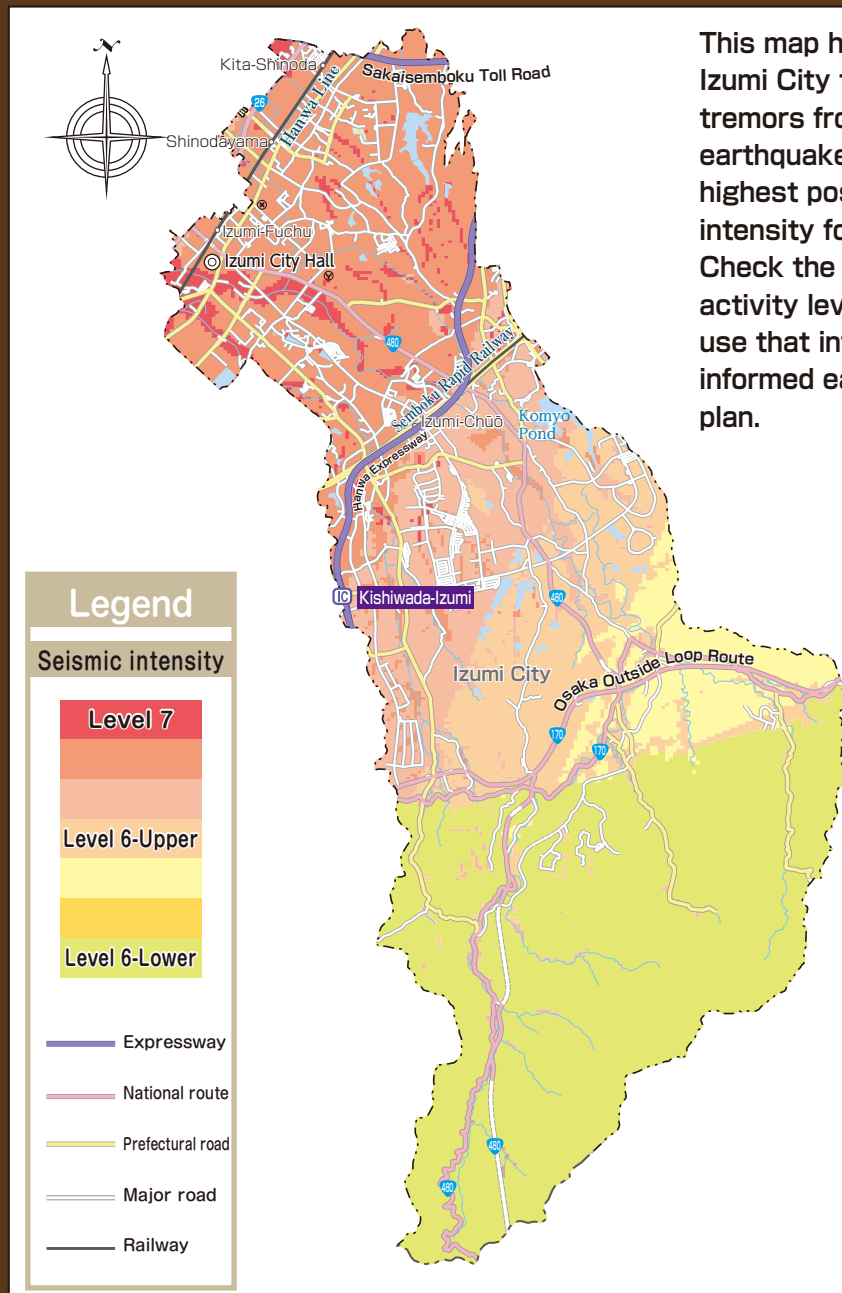
Cooperate with your neighbors to rescue or aid people stuck under house debris or furniture.

10 Before taking refuge in your nearest evacuation center, double check your electricity and gas lines.



Should evacuation become necessary, make sure to turn off your electric breaker and your gas line beforehand.

Tremor-prone Area Map



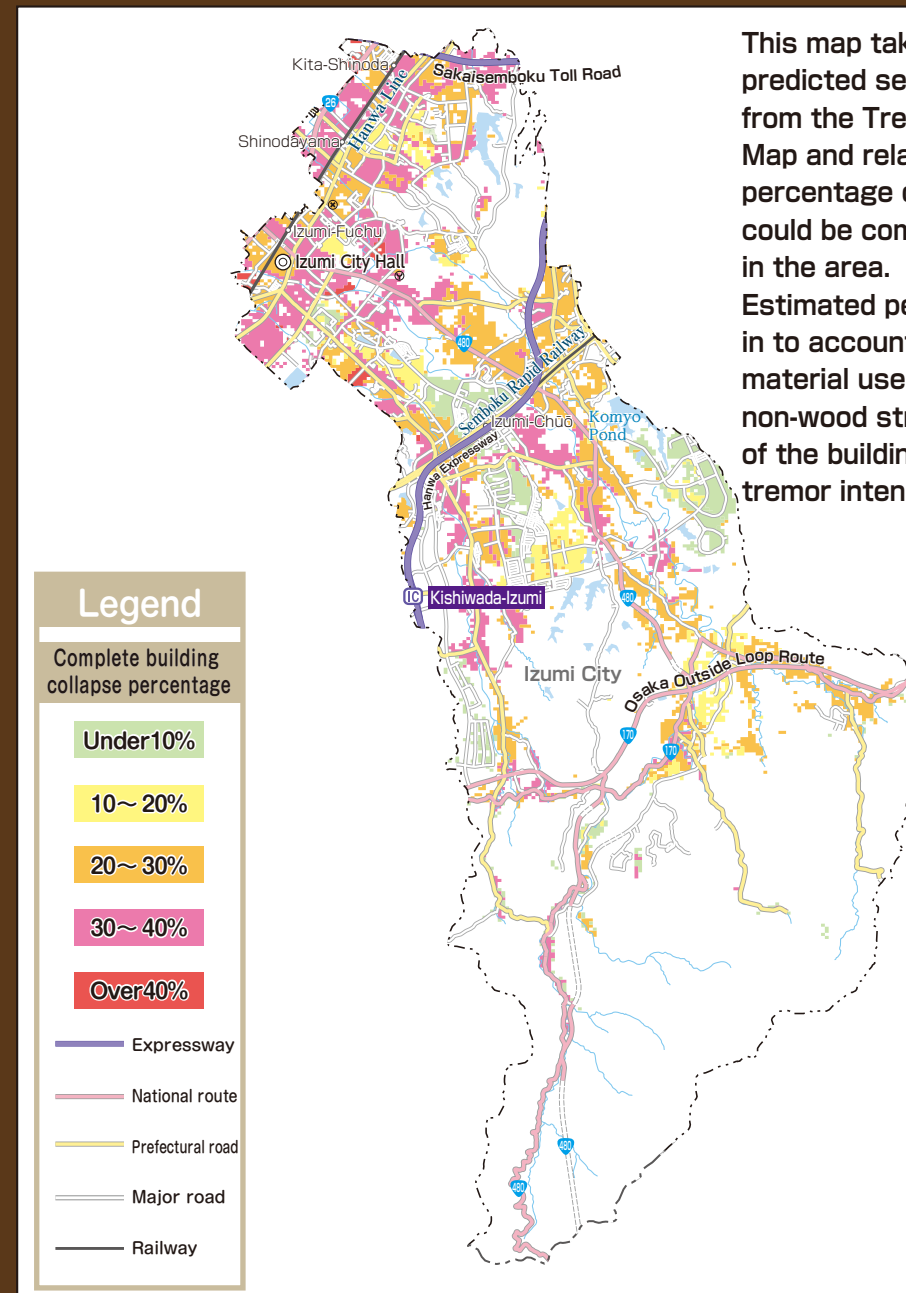
This map highlights areas within Izumi City that are prone to tremors from various types of earthquakes and forecasts the highest possible seismic intensity for each area. Check the predicted seismic activity level of your area and use that information to make an informed earthquake disaster plan.

Location of earthquake source faults that affect the city



Data based on studies by Japan Headquarters for Earthquake Research Promotion - Earthquake Research Committee entitled "Survey on Uemachi Fault Zones" "Long-term Assessment of MTL Fault Zone" (both studies made publically available on 2004 March 10th)

Building Collapse Risk Map



This map takes the highest predicted seismic activity from the Tremor-prone Area Map and relates it to the percentage of buildings that could be completely damaged in the area. Estimated percentages take in to account the building material used (wood or non-wood structures), the age of the buildings, and the tremor intensity of the region.

Find your area of residence on this map and have discussions with your family about making your house earthquake resistant and possible evacuation routes.

